

OXYGEN FILLER VALVE - MAINTENANCE PRACTICES

1. General

- A. The oxygen filler valve is located behind a cover assembly located on the right side of the airplane at FS 309.90 on Model 208, and FS 357.90 on the 208B. The cover assembly is attached by 4-1/4 turn flush-head studs.

2. Oxygen Filler Valve Removal/Installation

WARNING: Disconnect the high-pressure line from the regulator adapter before attempting any maintenance procedure on the high-pressure side of the system (indicating or filler valve). Refer to Chapter 35, Oxygen System - Maintenance Practices Figure 201 Item 9.

WARNING: Do not disconnect the safety wired adapter on the regulator.

NOTE: Use extreme care to ensure every port on system is kept thoroughly clean and free of water, oil, grease, and solvent contamination.

NOTE: Cap all openings immediately upon removal of any component. Do not use tape or caps which will induce moisture.

NOTE: Lines and fittings shall be clean and dry. One of the following methods may be used to clean lines.

- A. Remove Oxygen Filler Valve (Refer to Figure 201).

- (1) Remove aft baggage partition to gain access to filler valve assembly.
- (2) Loosen line assembly (11) from filler valve body (10).
- (3) Unscrew filler valve from body filler valve end (5).
- (4) Remove sleeve assembly (8) from filler valve end (5).
- (5) Remove O-rings (12) and (13) from sleeve assembly (8).

NOTE: The O-rings are the only field-repairable/replaceable parts of the filler valve assembly.

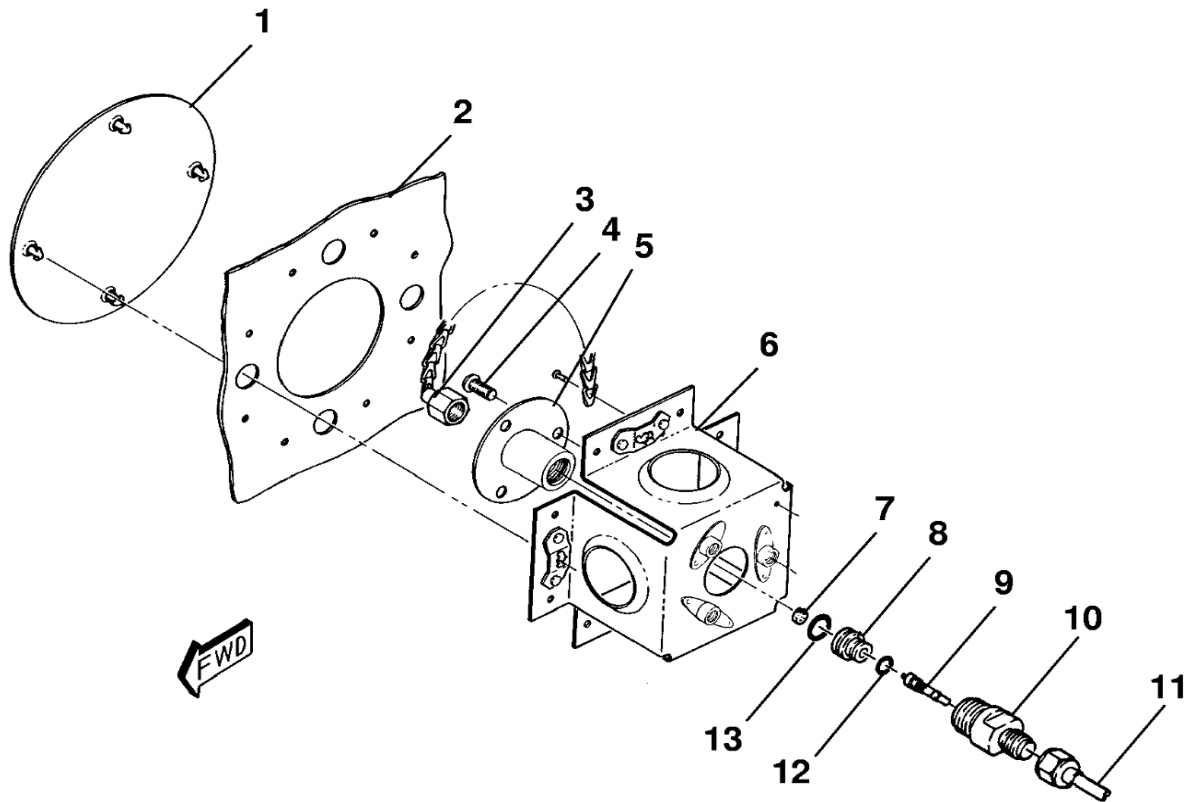
- (6) If filler valve end (5) is damaged, remove by loosening screws (4) from outside of airplane through access port.

- B. Install Oxygen Filler Valve (Refer to Figure 201).

- (1) Install O-rings (12) and (13) on sleeve assembly (8).
- (2) Ensure that valve core (9) is properly positioned in filler body assembly and bronze filter (7) is positioned in sleeve assembly (8).
- (3) Screw filler valve assembly into filler valve end (5).
- (4) Attach line assembly (11) to filler valve body (10).
- (5) Test for leaks.
- (6) Reinstall aft baggage partition.

Figure 201 : Sheet 1 : Oxygen Filler Valve Installation

A22283

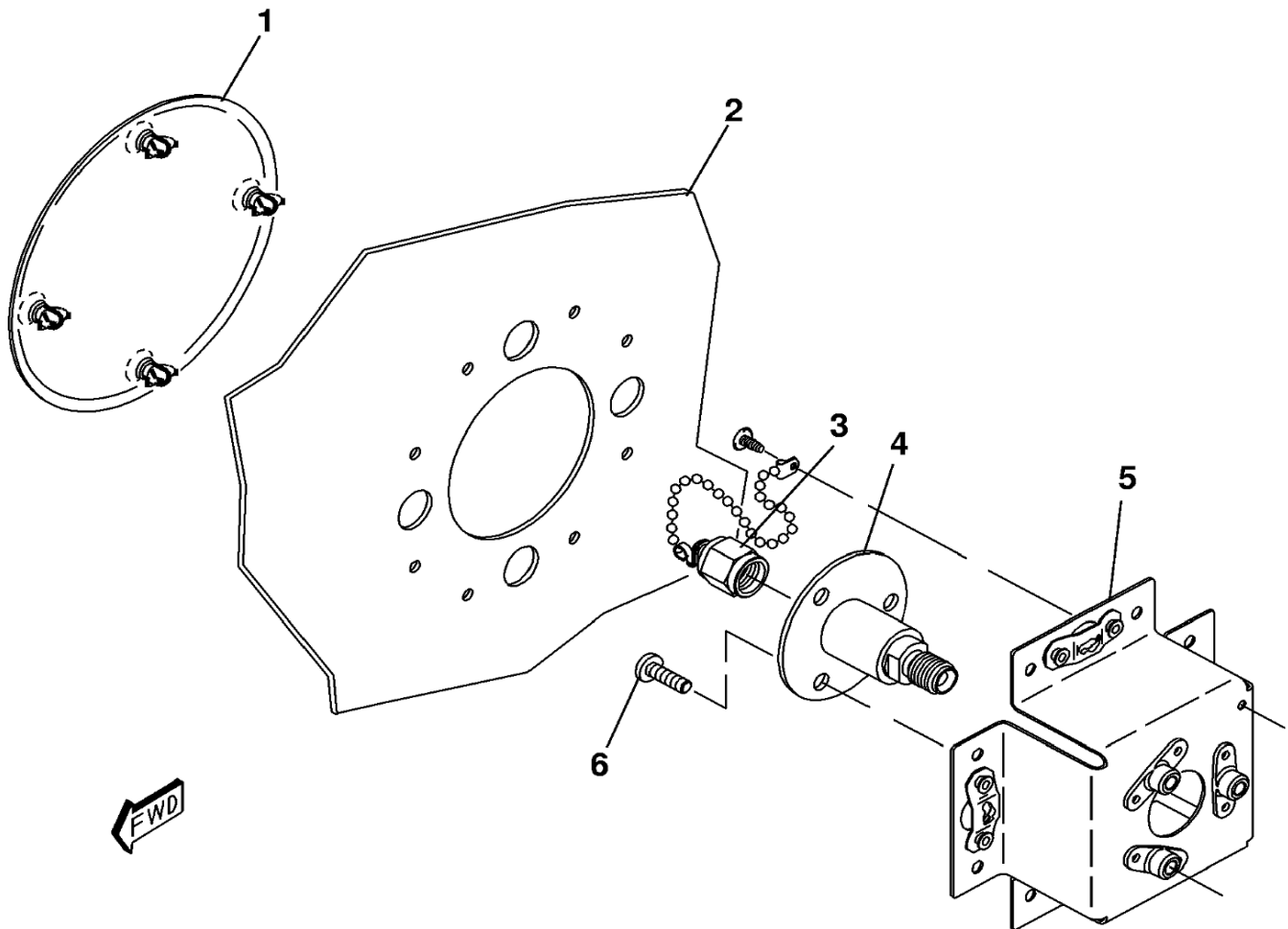


1. COVER ASSEMBLY
2. SKIN
3. CAP AND CHAIN ASSEMBLY
4. SCREW
5. FILLER VALVE
6. BRACKET ASSEMBLY
7. BRONZE FILTER
8. SLEEVE ASSEMBLY
9. VALVE CORE
10. FILLER VALVE BODY
11. HIGH-PRESSURE LINE
12. O-RING
13. O-RING

2614X1219

Figure 201 : Sheet 2 : Oxygen Filler Valve Installation

A22284



1. COVER ASSEMBLY
2. SKIN
3. CAP AND CHAIN ASSEMBLY
4. FILLER VALVE
5. BRACKET ASSEMBLY
6. SCREW

2614T1114

Figure 201 : Sheet 1 : Two-Port Oxygen Bottle and Regulator Installation

